

The Cove - Available Models

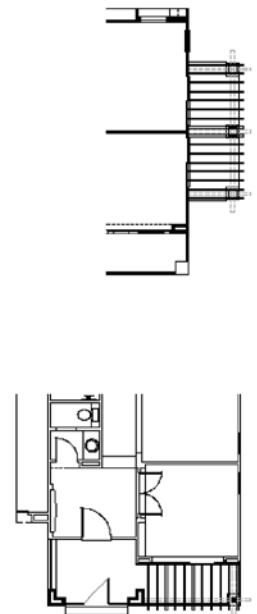
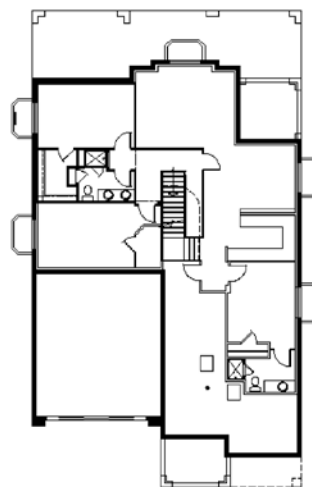
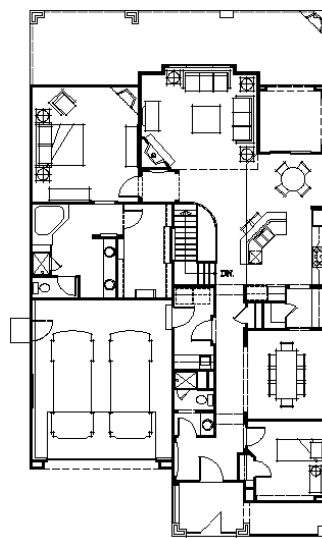
Del Mar

This traditional stone and stucco home has 2,555 square feet of living space that comes complete with Viking appliances, slab granite countertops and cherry cabinetry in the kitchen.

Porcelain tile and Kohler faucets and fixtures grace the bathrooms, while crown molding completes the dining room and master bedroom.

What's more, the Del Mar's soaring ceilings, open floor plan and backyard patio with built-in grill make entertaining a pleasure and a breeze.

Each luxurious detail of this two bedroom, two and half bath home makes it the epitome of traditional, casual elegance.



The Cove - Available Models

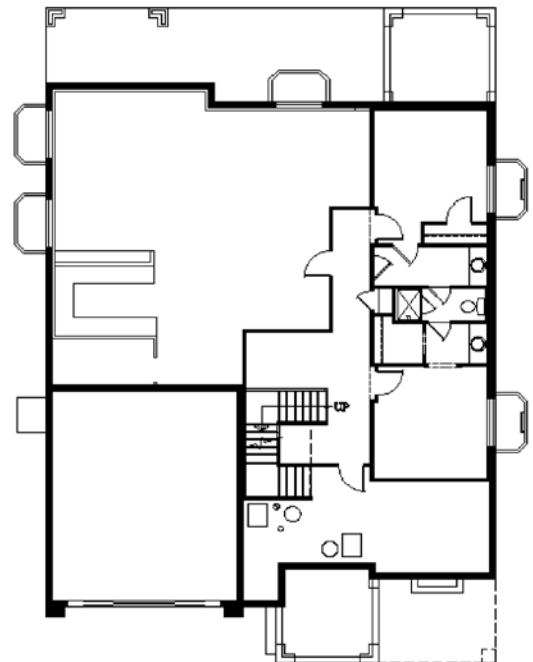
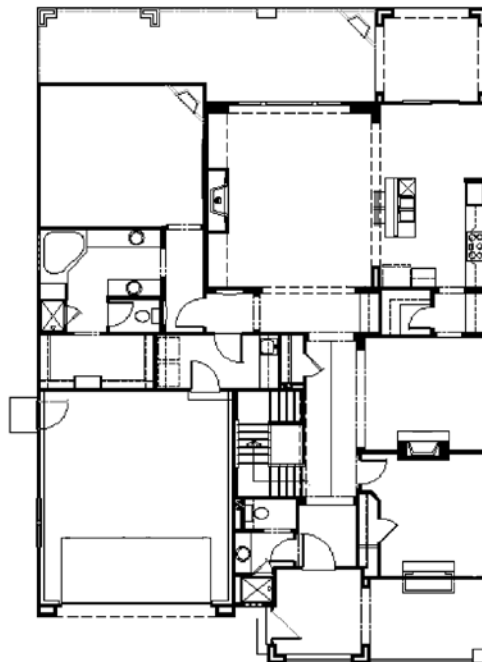
La Jolla

This 2,727-square-foot Ranch-style home welcomes you with an 8-foot solid Alder entry door leading to an open, flowing floor plan.

A gas log fireplace with cast stone surround and mantel in the great room and oak hardwood floors in the kitchen and breakfast room create a warm, inviting interior to this home.

The backyard patio is perfect for get-togethers or simply enjoying the sights and sounds of nature.

This three bedroom, two and a half bath home offers flexibility and countless opportunities for those seeking modern convenience with traditional appeal.



The Cove - Available Models

Monterey

This expansive home welcomes you with a porcelain tile entry with decorative inlay and boasts four bedrooms, three baths, a library and 10- to 15-foot ceilings throughout.

Sunlight cascades into every room through magnificent Pella windows that are also energy efficient.

Outdoors is just as spectacular with a spacious backyard patio and view of the natural surroundings of the Bowles Reservoir.

With a custom designed cedar plank garage door, solid core interior doors throughout and a 50-year concrete tile roof, this 2,953-square-foot home is a showcase of quality.



The Cove - Available Models

Carmel

This two-bedroom, two bath home encompasses a blend of traditional elegance and state-of-the-art convenience.

From the crown molding in the dining room and master bedroom to the brushed chrome door and bath hardware, no detail was overlooked in the design of this 1,693-square-foot home.

A barrel vaulted ceiling enhances the entry hall while slab granite countertops, porcelain splash and under cabinet lighting complete the kitchen.

The Carmel is pre-wired for home automation, audio and security and, like all homes in The Cove, comes complete with front yard landscaping with automatic sprinkler system.

